

SAMPLE STATION DATA

SAMPLE NO.

F $+59^{\circ} + 00' . 230$
 1 \pm lat \pm long no. 11

INSTITUTE OF GEOLOGICAL SCIENCES - MARINE GEOLOGY UNIT

CRUISE NO.

83 W.H. 02
 year : ship : no 18

DATE

06 01
 mnth : day 22

TIME (local)

11 45
 hrs : mins 26

WATER DEPTH

133
 metres 30

POSITION
FIXING
METHOD

L COMMENT 32

NAVIGATIONAL READINGS

(tick lanes with best intersection)

CHAIN

0E

RED

GREEN

PURPLE

LATITUDE

+59 16 . 84
 \pm degs : mins (decimal) 63

LONGITUDE

+003 1 . 34
 \pm degs : mins (decimal) 71

POSITION

ADDITIONAL INFORMATION : **B25.**

EQUIPMENT TYPE:

1 = sample recovered

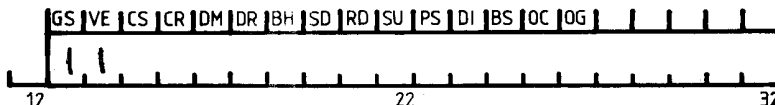
2 = no sample (geological reasons)

3 = no sample (equipment failure)

4 = no sample (undifferentiated)

G

dup cols 2-11



T.D. metres

47 0
 50 55

SUMMARY SAMPLE DESCRIPTION : (Free text - max. 69 characters)

H dup cols 2-11

**V. SOFT SANDY MUD ON COL-BANDED GR
 EY/BROWN CLAY ON STIFF GREEN CLAY**

GEOTECHNICAL DATA :

RAW DATA

PENETROMETER

Head	Readings			Head	Readings	
				x2	1.8	2.0
				x2	3.4	2.3
				x2	2.2	2.3
				x2	3.7	4.2
				x2	3.1	2.8
				x2	3.3	2.5
				x2	2.7	3.0
				x2	5.6	5.8
x100	2.5	2.1	2.2	x25	3.7	3.8
x100	2.8	3.1	2.4	x25	3.8	5.0
				x25	6.4	6.6
				x25	5.3	5.7

AVERAGED DATA

DEPTH

PENETROMETER
(KPa)

HAND VANE
(KPa)

I dup cols 2-11	03 0		3.8
	14	18	22
	08 0		5.7
	25	29	33
	13 0		4.5
	36	40	44
	18 0		7.9
	47	51	55
	23 0		5.9
	58	62	66
	28 0		5.8
	69	73	77
I dup cols 2-11	3.0 0		5.7
	14	18	22
	3.3 0		11.4
	25	29	33
	3.5 0	2.2 6.6	9.3.7
	36	40	44
	3.6 5	2.7 6.6	11.0.0
	47	51	55
	4.1 0		1.6 2.5
	58	62	66
	4.4 0		1.3.7.5
	69	73	77

SAMPLE DESCRIPTION SHEET

INSTITUTE OF GEOLOGICAL SCIENCES - MARINE GEOLOGY UNIT

SAMPLE NO.

59 00 230

SURFACE SAMPLE

Equipment Used: GS

Seabed Photo: ~~Yes~~/No

Stored in: 1 Jar, ~~1~~ Bags.

Sandy mud, very soft, very sandy with very fine to fine grained quartz, some rock frags, occasional forams, coarse grained shell fragments and rounded quartz. Very gelatinous in grab bottle. Some grain-coated ? larvae.

CORE SAMPLE

Equipment Used: VE

Stored in: 5 Cut Cores, ~~Uncut Cores~~, 2 Jars, ~~1~~ Bags.

Depth	Log	Description	Core Photo: Yes No	Sub Samples	Geotechnical Log
(m)					
0-36		Olive sandy mud as above with large bivalve shell 65mm across			
		Sandy mud similar to above but more brownish in colour and in places much less sandy - v. soft clay at 0.8m.			
1		Interstratified very soft brown clay, very soft grey silty clay and v. fine sandy clayey silt. becoming greyer downwards with fewer brownish bands and silty laminae			
2		silty bands show small fining upward cycles			
		Clasts of stiff clay from unit below.			
3		Slightly silty olive clay (soft)			
3-1					
3-4		v. stiff - stiff highly plastic green/black clay with silty- of sandy laminae & bands			
4		noting poor distribution			
		pebble v. well rounded low sphericity			
4.70		TD (incl. 2 shoes)			
5					
6					

○ shear strength Δ compressive strength

